

DEMENTIA

Alzheimer's

Vascular

Huntington's

Lewy Body

Fronto-Temporal

Cruetzfeldt-Jakob

Wernike/Korsakoff

Parkinson's

REVERSIBLE DEMENTIA/DELIRIUM

Temporary cognitive decline as a symptom of another medical condition.

- D** DRUGS (intoxication)
- E** EMOTIONAL (depression; anxiety; psych)
- M** METABOLIC (overdose; hormones)
- E** EYES AND EARS (sensory disorientation)
- N** NUTRITIONAL (malnutrition; dehydration)
- T** TUMOR
- I** INFETIONS/INJURY (UTI; parasites; TBI)
- A** ANEMIA

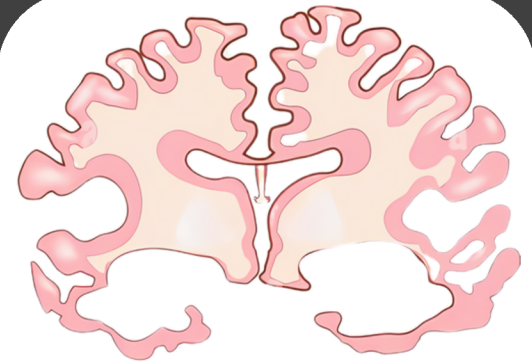


NORMAL



MILD

SEVERE



IRREVERSIBLE DEMENTIA

- **Alzheimer's Disease**
 - Progresses in stages
 - (plaques and tangles)
- **Fronto-Temporal Dementia (FTD)**
 - 3 variants (behavior FTD/Pick's Disease, semantic and non-fluent Primary Progressive Aphasia)
- **Vascular Dementia**
 - Diffuse brain tissue death as a result of inadequate blood flow.
 - Caused by multiple infarcts, cardiovascular disease, small vessel disease, hemorrhage
- **Lewy Body Dementia & Parkinson's Dementia**
 - Protein deposits called "Lewy Bodies"
 - Diminished cognition + hallucinations
- **Creutzfeldt-Jacob Disease (variant of Mad Cow Disease)**
 - Death after 12 months
- **Huntington's Disease (chorea)**
 - Genetic neurodegenerative disease/onset: 35yo/process: 15-20yrs
- **Wernicke's Encephalopathy/Korsakoff Syndrome**
 - "alcoholic dementia"